



Tracheostomy Management in Critical Care

Electronic update for collaborators

Up to end July 06

Lesley Morgan, Trial Manager

Covered in this update:

- Patient recruitment figure
- June 06 recruitment
- July 06 recruitment
- ICUs not yet recruited
- New ICUs joining TracMan
- ICUs awaiting approvals to join TracMan
- Trial office news
- Date of next collaborators meeting

Total Number Patients Recruited:

372

June 06

June 06

June 2006 Recruitment breakdown

June 06

June 06

ICUs recruited patients in June 06

	1. Derriford Hospital Plymouth	3	
	2. Luton & Dunstable Hospital	2	
	3. Castle Hill Hospital Hull	1	
	4. Queen Alexandra Hospital Portsmouth	1	
	5. Royal Surrey County Hospital	1	
	6. Southampton General Hospital	1	
	7. St Thomas' Hospital	1	
	8. Ninewells Hospital and Medical School	1	
	9. Royal Devon & Exeter Hospital	1	
	10. University Hospital Lewisham	1	
	11. Manchester Royal Infirmary (Cardiac ICU)	1	
	12. South Tyneside Hospital	1	
	13. Weston General Hospital	1	

Thank You!

Thank You!

June 2006 Recruitment:

16

July 06

July 06

July 2006 Recruitment breakdown

July 06

July 06

ICUs recruited patients in July 06

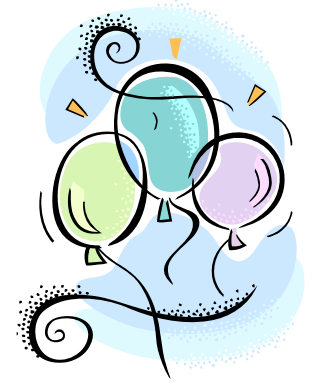
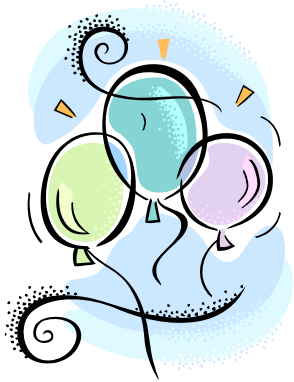
	1. Queen Alexandra Portsmouth	2	
	2. Rochdale Infirmary	2	
	3. Taunton & Somerset Hospital	2	
	4. University College Hospital	2	
	5. Wythenshawe Hospital	2	
	6. Derriford Hospital	1	
	7. Manchester Royal Infirmary (Cardiac ICU)	1	
	8. Ninewells Hospital and Medical School	1	
	9. Chorley Hospital	1	
	10. South Tyneside Hospital	1	

July 2006 Recruitment:

15

Thank You!

Thank You!



Well done to

all our recruiting hospitals

However.....

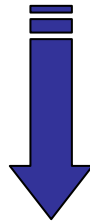




Our special thanks go to the following
ICUs who have recruited consistently
over a 6 month period
since Jan 06



(at least one patient a month for 6 months)



Derriford Hospital – Plymouth
St Thomas' Hospital – London



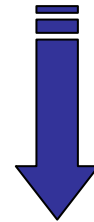
Just One!



.....And to the following
ICUs who have recruited consistently
over a **3** month period
since Jan 06



(at least one patient a month for 3 months)



Just One!



Bedford Hospital
Ninewells Hospital and Medical School
Rochdale Infirmary
Southampton Hospital
Taunton & Somerset Hospital
Wythenshawe Hospital

Just One!



A special welcome to the following hospitals:

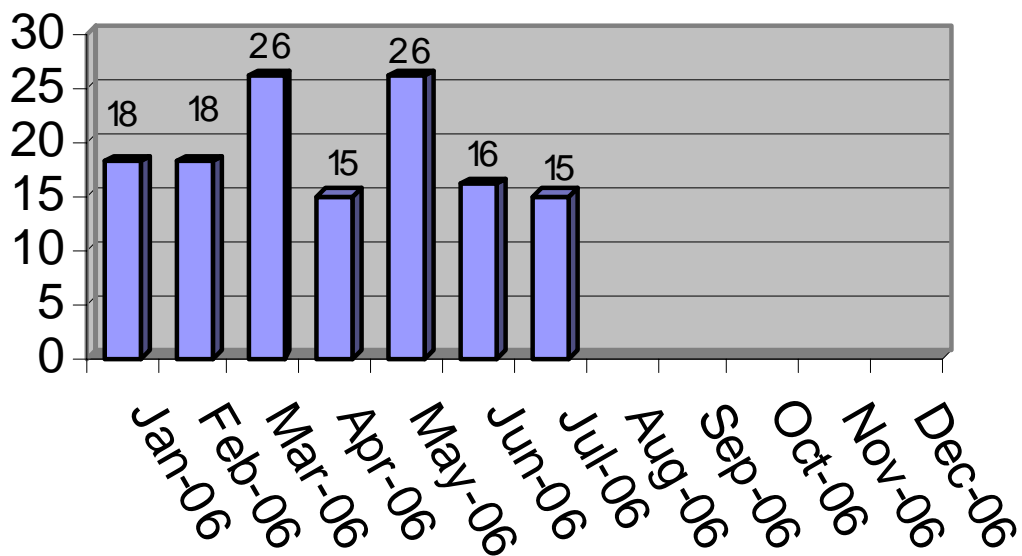
1. Luton & Dunstable
2. South Tyneside



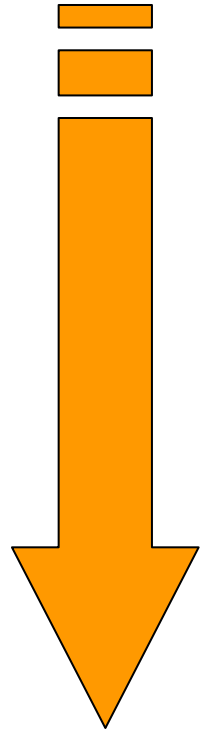
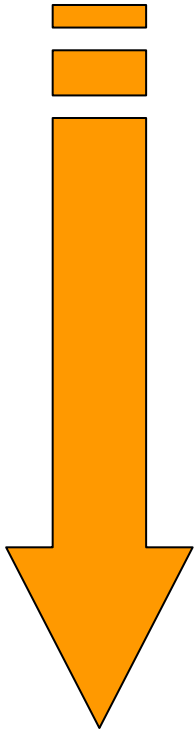
Who recruited their first patient(s) in June/July!

Recruitment Graph 2006

Patient recruitment by month



June (10) and July (11)
patients DOWN
compared to May!



Lets aim for a return
of the smile in
August!





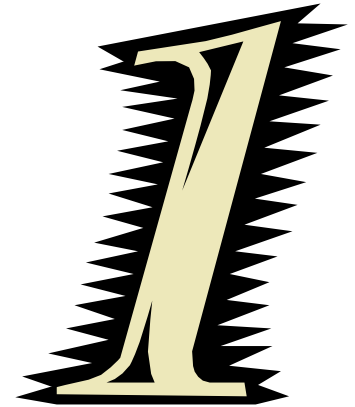
Remember!



Just one!



1



We need each ICU to recruit at least 1 patient to the trial each month!



The ICS Trials Group



ICUs not yet
recruited a patient

ICUs not yet recruited:

1. Aberdeen Royal Infirmary
2. City Hospital Birmingham
3. Glenfield Hospital
4. North Middlesex Hospital

**We hope to have a recruit
from you shortly!**

New 'live' ICUS

The following ICUs became 'live' in June/July....

(approvals through/now able to recruit patients)

1. Luton & Dunstable Hospital
2. Royal Bournemouth Hospital
3. South Tyneside Hospital
4. Causeway Hospital
5. City General Stoke on Trent
6. Huddersfield Royal Infirmary
7. Whittington Hospital

Welcome!

New 'waiting' ICUs

Approvals yet to be finalised

- 1 Site Specific Assessments**
- 2 Partnership Agreement**
- 3 R&D Approval**

Will join TracMan soon....

1. Freeman Hospital - Newcastle
2. Hairmyres Hospital – Scotland
3. Hull Royal Infirmary
4. King George Hospital – Essex
5. New Cross Hospital - Wolverhampton
6. Princess Alexandra Hospital – Essex
7. Royal Lancaster Infirmary

Centre overview

No. centres 'live' able to recruit:	55
No. centres 'waiting'	7
	<hr/>
Centres collaborating	62

Trial Office News

TracMan Website Updated

Take a look at our newly updated website!

<http://www.tracman.org.uk/>

Daily updates:

You can now see the latest recruitment figures and the name of the last hospital recruiting on the previous day.

Data Monitoring Meeting

Here at the trial office we have been busy data cleaning ready for the forthcoming annual Data Monitoring and Ethics Committee Meeting (DMEC). This group of individuals reviews the study data to look at safety issues and violations of allocation.

Interested in how we prepare for the DMEC?

When we receive your data forms all forms are checked for missing data. Each form is then double entered into the trial database (once by one person and a second time by another person). The entries are then compared and any discrepancies referred back to the hard copy to identify the correct response.

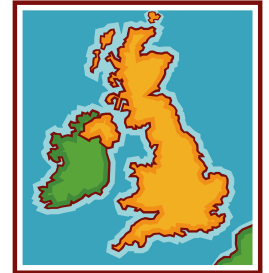
Once this 'cleaning' has taken place, the data is then tabulated for the DMEC by the Trial Statistician.

We will report any news from the meeting at a later date.

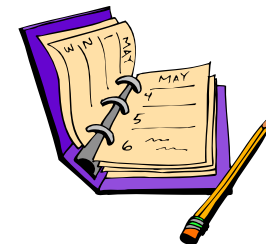


Research Nurses Update

- Our two nurses will be starting on 18th September and after an induction period will be contacting you to organise a visit.
- Further details nearer the time!



A date for your Diary!



TracMan Collaborators Meeting

Monday 2nd October 2006 in London

Book your day off now!



Further details to follow nearer the time.

And remember.....we need just one
patient a month from each ICU,
just one!



Best wishes
from the
TracMan Team!

**We look forward to receiving
your patients in August!**

Email: TracMan@nda.ox.ac.uk

Tel: 01865 857627