



## Tracheostomy Management in Critical Care

Electronic update for collaborators

End April 06

Lesley Morgan, Trial Manager

## Covered in this update:

- Patient recruitment figure
- April 06 recruitment
- ICUs not yet recruited
- New ICUs joining TracMan
- Recruitment Review Questionnaire
- Date of next collaborators meeting

# **Total Number Patients Recruited:**

# **315**

April 06

April 06

# April 2006 Recruitment breakdown

April 06

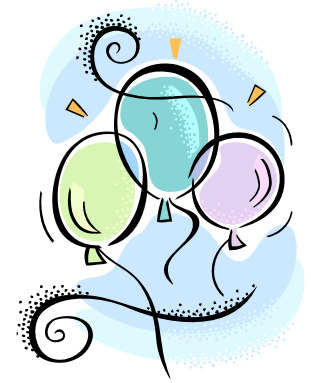
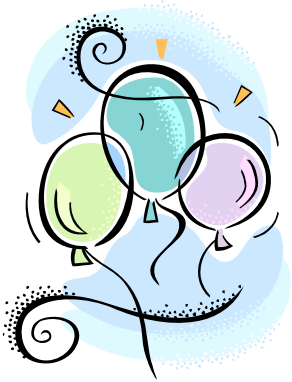
April 06

# ICUs recruited patients in April 06

	1. Derriford Hospital	7	
	2. Eastbourne Hospital	2	
	3. Manchester Royal (Gen ICU)	1	
	4. John Radcliffe, Oxford	1	
	5. St Thomas' Hospital	1	
	6. Southampton General Hospital	1	
	7. Wythenshawe Hospital	1	
	8. Yeovil District General Hospital	1	
		—	
	<b>April 2006 Recruitment:</b>	<b>15</b>	

**Thank You!**

**Thank You!**



Well done to:

**Derriford Hospital**

Our top recruiting hospital in April!



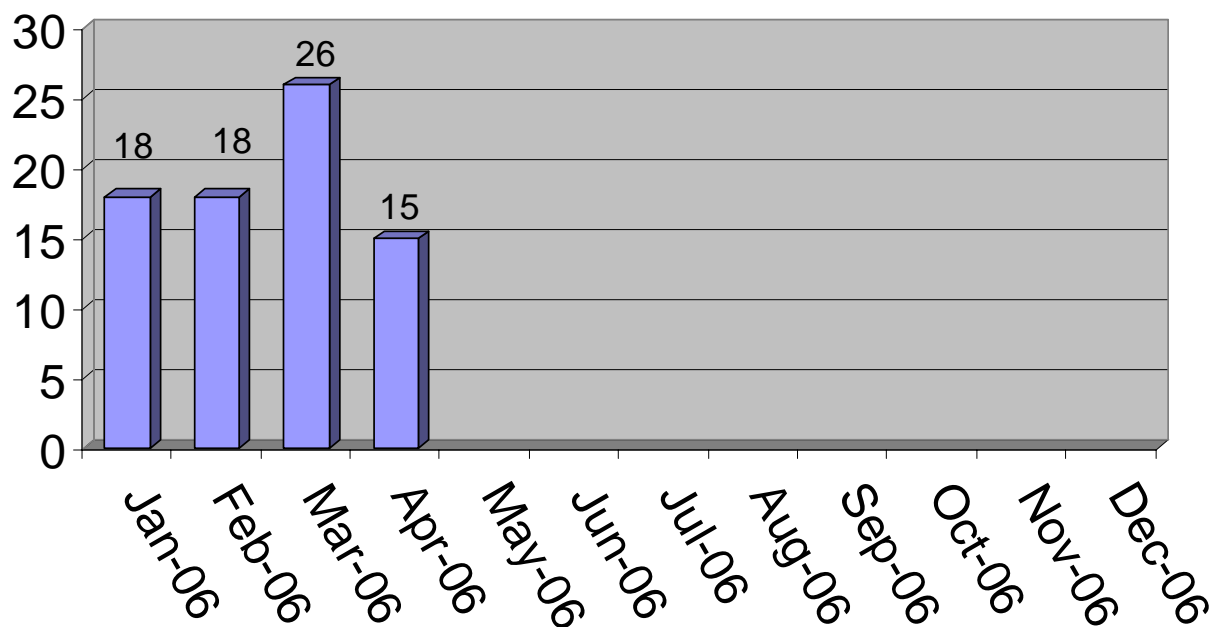
A special welcome to  
Manchester Royal  
Infirmary's General  
ICU who recruited  
their first patient  
in April!

**Welcome!**



# Recruitment Graph 2006

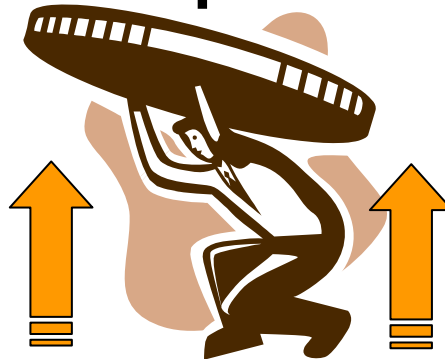
## Patient recruitment by month





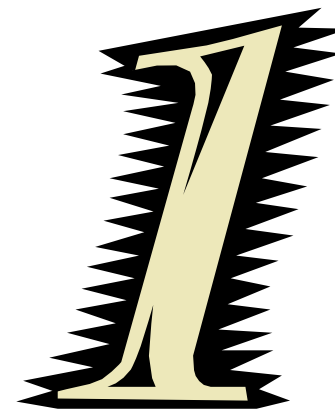
April was  
11 patients down  
compared to March!

Lets lift recruitment  
back up there!





The magic number is



We need each ICU to recruit at least 1 patient to the trial each month!



- Please let me know if you have any ideas for **practical** ways we can support your identification and recruitment of patients to TracMan.
- No idea is too 'silly', just let me know!

[lesley.morgan@nda.ox.ac.uk](mailto:lesley.morgan@nda.ox.ac.uk)

ICUs not yet  
recruited a patient

# ICUs not yet recruited:

1. Ninewells Hospital, Dundee
2. North Middlesex Hospital
3. Barnet Hospital
4. University College Hospital, London
5. City Hospital Birmingham
6. Aberdeen Royal Infirmary

**We hope to have a recruit  
from you shortly!**

# New ICUs

Those finalising approvals  
to join TracMan

# Will join TracMan soon....

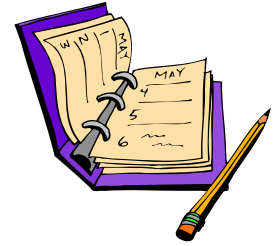
1. Causeway Hospital – Co Londonderry
2. City General - Stoke on Trent
3. Freeman Hospital - Newcastle
4. Glenfield Hospital – Leicester
5. Hairmyres Hospital – Scotland
6. Huddersfield Royal Infirmary
7. Hull Royal Infirmary
8. King George Hospital - Essex
9. Luton & Dunstable Hospital
10. Princess Alexandra Hospital – Essex
11. Royal Bournemouth Hospital
12. Royal Lancaster Infirmary
13. South Tyneside District Hospital
14. Whittington Hospital – London

# Recruitment Review Questionnaire



- Thank you very much to all for returning the questionnaire
- The information provided has been extremely helpful
- If you raised an issue in the 'comments' section we will get back to you on an individual basis in the near future

# A date for your Diary!



## TracMan Collaborators Meeting

### Monday 2<sup>nd</sup> October 2006 in London

### Book your day off now!



Further details to follow nearer the time.



Did I mention that we need just one patient a month from each ICU, just one!



Best wishes  
from the  
TracMan Team!

**We look forward to receiving  
your patients in May!**